

Paradise Palms

BROCHURE



PARADISE PALMS



Paradise Palms é um incrível condomínio de férias tipo resort localizado em Kissimmee, Flórida. Com casas que vão até 6 quartos e 5 banheiros, Paradise Palms possui um ambiente com fontes e cachoeiras que fazem você se sentir num verdadeiro paraíso. O condomínio é perfeito para quem quer aproveitar as férias em Orlando. Paradise Palms fica apenas a 8 minutos de Disney World, Sea World e Universal Studios, além de estar próximo a diversas outras atrações, incluindo diversos campos de golfe.

Amenidades:

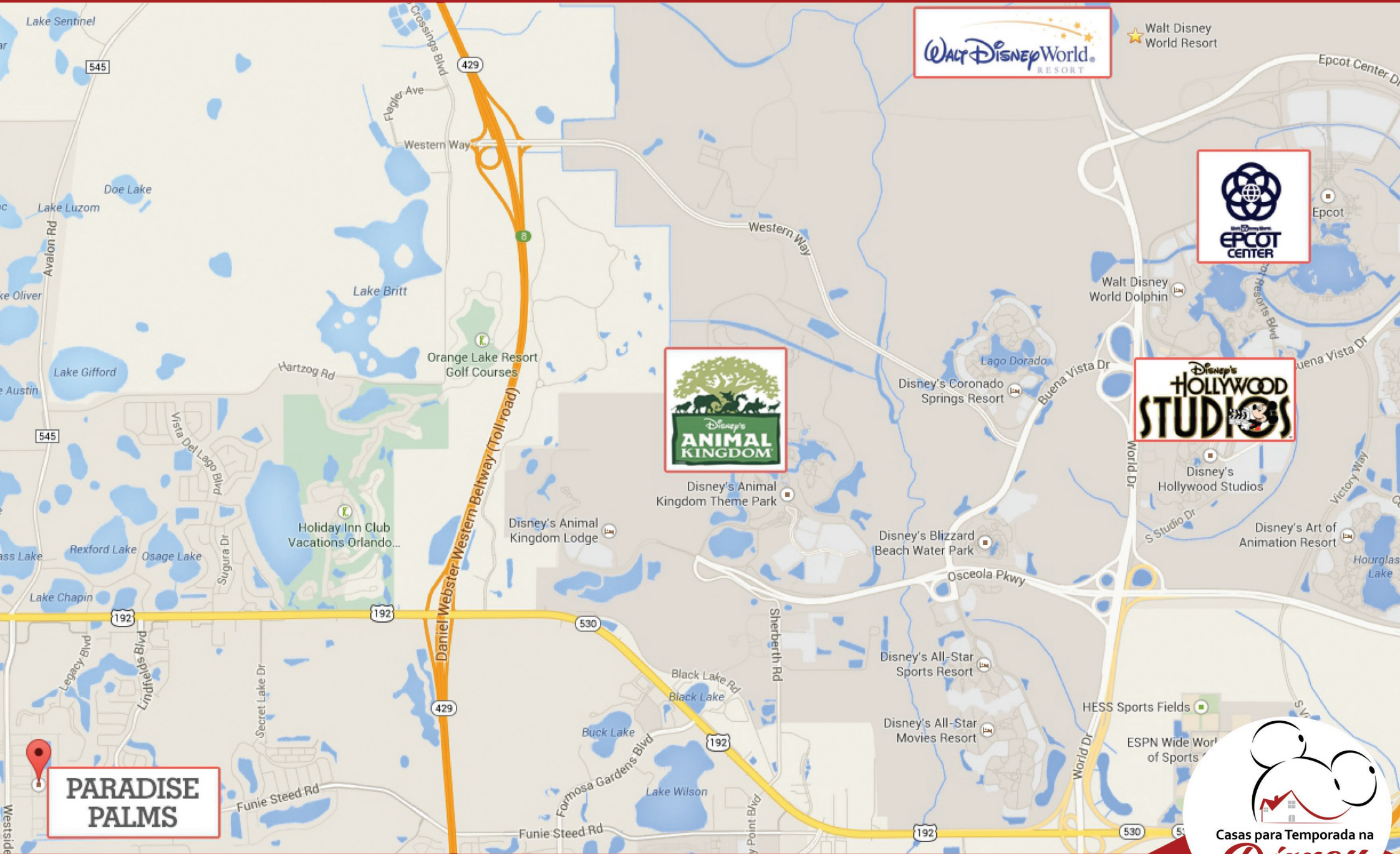
- Portaria 24h;
- Segurança digital;
- Internet wireless de alta velocidade;
- Clubhouse completo;
- Piscina coberta e com cascata;
- Piscina infantil;
- Sauna;
- Sala de cinema;
- Sala de jogos;
- Quadras de basquete e de vôlei;
- Quadras de tênis iluminadas;
- Fitness center;
- Churrasqueira.

Previsão de entrega: 6 meses

Estimativa de condomínio: US\$ 480,00



MAPA



PARADISE PALMS - KISSIMMEE



CLUBHOUSE | PLAYGROUND | QUADRA DE TÊNIS MAPA



CINEMA | TIKI BAR | SALA DE JOGOS



PARADISE PALMS - KISSIMMEE



PLANTA CONDOMÍNIO

investor\$Inc
Assessoria Imobiliária Internacional

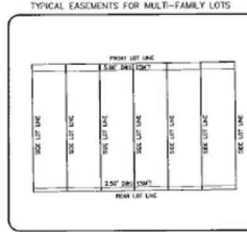
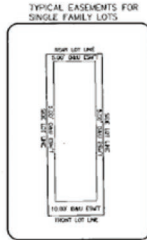
PARADISE PALMS RESORT - PHASE 4

LYING IN SECTION 6, TOWNSHIP 25 SOUTH, RANGE 27 EAST, OSCEOLA COUNTY, FLORIDA
BEING A REPLAT OF TRACT "H", PARADISE PALMS RESORT-PHASE 1,
AS RECORDED IN PLAT BOOK 20, PAGES 23 THROUGH 25

EED RESTRICTIONS FOR THIS PLAT ARE FILED IN D.R. BOOK NO. _____, PAGE _____, AND (ARE) (ARE NOT) ACCOMPANIED BY EED COVENANTS.

LEGEND

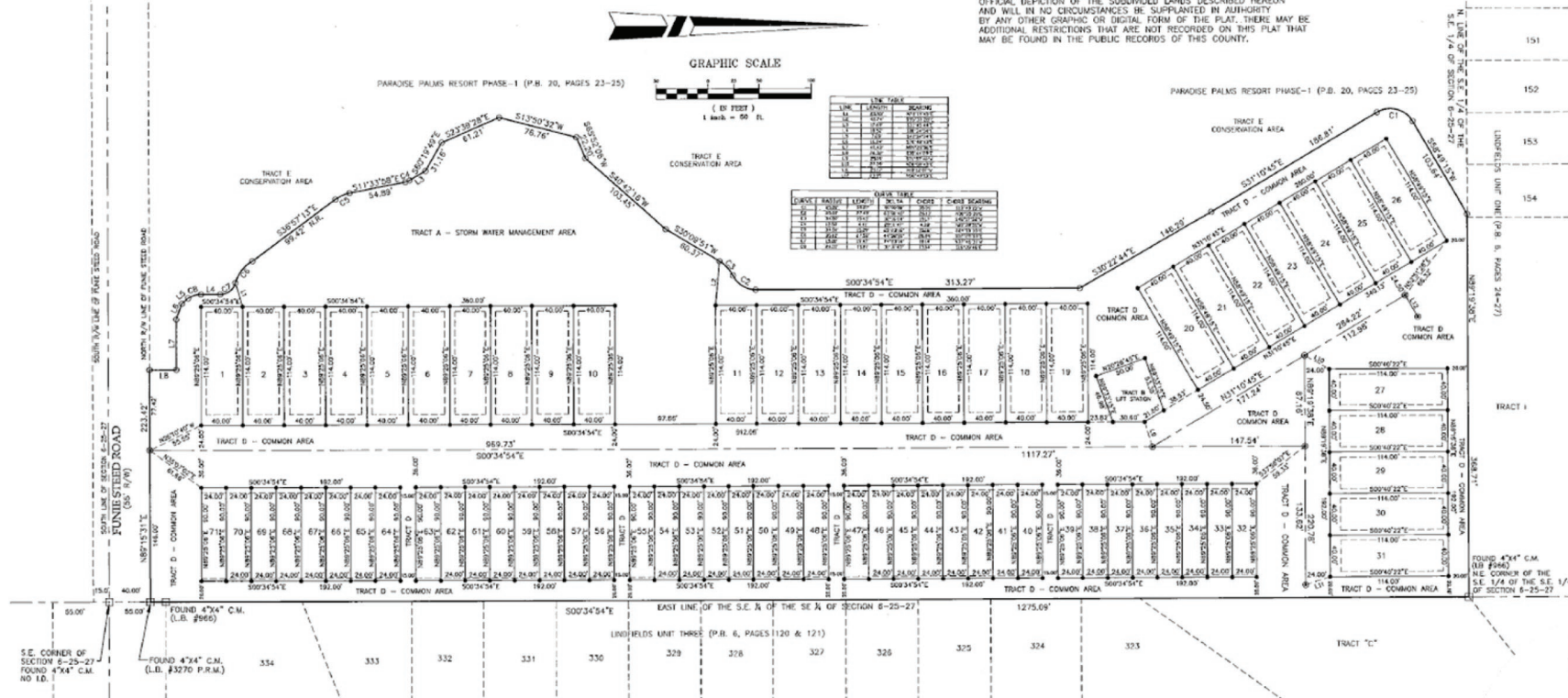
CB	CURVED BEARING	PC	POINT OF COMPOUND CURVATURE
CD	CURVED	PC	POINT OF CURVATURE
DR	DRAINAGE & UTILITY	P/C	POINT OF NON-TANGENT CURVE
EMT	EASEMENT	P/C	POINT OF BEGINNING
FSD	FLOOD	P.C.	POINT OF COMMENCEMENT
IR	IRON ROD	PT	POINT OF TANGENCY
L	LENGTH OF CURVE	R	RADIUS
LS	LOCAL BUSINESS	R	RADIUS POINT
N	NORTH	S	SYSTEM
NLS	NOT TO SCALE	TAN	TANGENT
NS	NOTED RECORDS	TAN	TANGENT
PL	PLAN BOOK	∠	DELTA OR CENTRAL ANGLE
PC	POINT OF CURVATURE	∠	SET 5/8" IRON ROD WITH CAP
PRM	PERMANENT REFERENCE MONUMENT	∠	SET 3/8" IRON ROD WITH CAP
PCP	PERMANENT CONTROL POINT	∠	SET 1/4" IRON ROD WITH CAP (P&H)
PL	POINT OF WAY	∠	SET 3/8" IRON ROD WITH CAP (P&H)
PL	PLANNING	∠	SET 1/4" IRON ROD WITH CAP (P&H)
PL	REGISTERED LAND SURVEYOR	∠	SET 3/8" IRON ROD WITH CAP (P&H)



PLAT NOTES

- ASSUMED NORTH MERIDIAN, BEARINGS BASED ON THE EAST LINE OF THE SOUTHEAST 1/4 OF THE SOUTHWEST 1/4 OF SECTION 6, TOWNSHIP 25 SOUTH, RANGE 27 EAST, OSCEOLA COUNTY, FLORIDA, AS BEING SOUTH 92°44'18" WEST.
- TRACT D IS HEREBY DESIGNATED AS COMMON AREA AND SHALL BE THE JOINT RESPONSIBILITY OF THE PARADISE PALMS RESORT HOMEOWNERS ASSOCIATION AND IS SUBJECT TO A BLANKET DRAINAGE AND UTILITY EASEMENT.
- ALL ROADS WITHIN TRACT D SHALL BE PRIVATE AND MAINTAINED BY THE PARADISE PALMS RESORT HOME OWNERS ASSOCIATION. THE PUBLIC USE RIGHTS OVER AND ACCESS SAID ROADS WITHIN TRACT D REQUIRE A PERPETUAL EASEMENT AND RIGHT OF WAY AND RIGHTS FOR THE BENEFIT OF SOLIDITY AND PICK UP SERVICES, FIRE PROTECTION SERVICES, POLICE SERVICES, AMBULANCE SERVICES AND OTHER AUTHORITIES OF LAW ENFORCEMENT. TRACT D SHALL BE SUBJECT TO THE ESTABLISHING OF SUCH SPREADS AND TRAFFIC CONTROL DEVICES AS DEEMED NECESSARY AND APPROPRIATE BY OSCEOLA COUNTY. TRACT D IS SUBJECT TO A BLANKET DRAINAGE AND UTILITY EASEMENT.
- LOTS 1 THROUGH 31 SHALL HAVE A 1000 FOOT DRAINAGE AND UTILITY EASEMENT ALONG ALL FRONT LOT LINES AND A 250 FOOT DRAINAGE AND UTILITY EASEMENT ALONG ALL REAR AND SIDE LOT LINES.
- LOTS 32 THROUGH 31 SHALL HAVE A 500 FOOT DRAINAGE AND UTILITY EASEMENT ALONG ALL FRONT LOT LINES AND A 250 FOOT DRAINAGE AND UTILITY EASEMENT ALONG ALL REAR LOT LINES.
- FOR CHAPTER 177.09(1)(b), FLORIDA STATUTES, ALL PLATTED UTILITY EASEMENTS SHALL PROVIDE THAT SUCH EASEMENTS SHALL ALSO BE EXPANDED FOR THE CONSTRUCTION, INSTALLATION, MAINTENANCE AND OPERATION OF CABLE TELEVISION SERVICES, PROVIDED, HOWEVER, NO SUCH CONSTRUCTION, INSTALLATION, MAINTENANCE AND OPERATION OF CABLE TELEVISION SERVICES SHALL INTERFERE WITH THE FACILITIES AND SERVICES OF AN ELECTRIC, TELEPHONE, GAS, OR OTHER PUBLIC UTILITY.
- TRACT D SHALL BE DEDICATED TO AND MAINTAINED BY THE OSCEOLA WATER AUTHORITY.

NOTICE: THIS PLAT, AS RECORDED IN ITS GRAPHIC FORM IS THE OFFICIAL DEPICTION OF THE SUBDIVIDED LANDS DESCRIBED HEREON AND WILL IN NO CIRCUMSTANCES BE SUPPLANTED IN AUTHORITY BY ANY OTHER GRAPHIC OR DIGITAL FORM OF THE PLAT. THERE MAY BE ADDITIONAL RESTRICTIONS THAT ARE NOT RECORDED ON THIS PLAT THAT MAY BE FOUND IN THE PUBLIC RECORDS OF THIS COUNTY.



HANSON, WALTER & ASSOCIATES INC. ENGINEERS, SURVEYORS, & PLANNERS - 400 WEST EMMETT STREET, KISSIMMEE, FLORIDA
PROFESSIONAL SURVEYING CERTIFICATE OF AUTHORIZATION NO. LB 3270

SHEET 2



Casas para Temporada na
Disney

MAPA CONDOMÍNIO

LEGEND:



SABAL PALM / BEACH PALM



PARADISE PALMS - KISSIMMEE



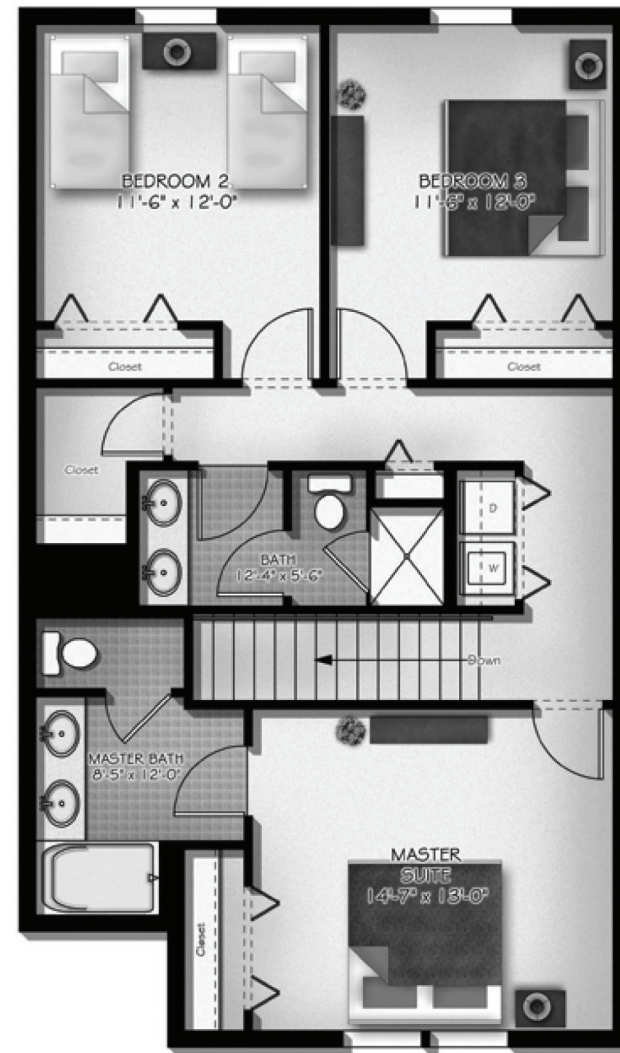
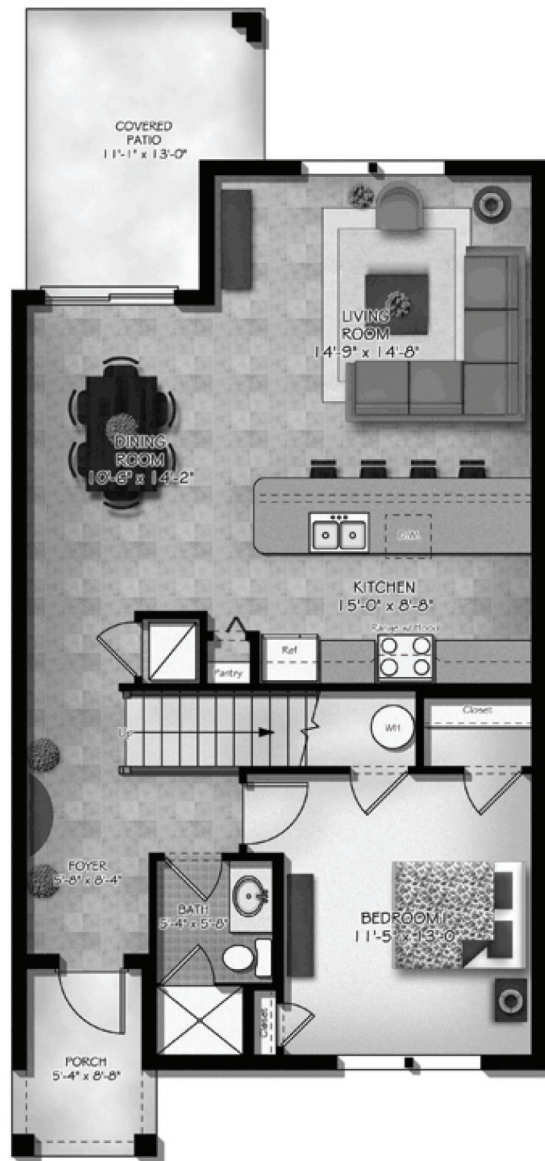
SABAL PALM / BEACH PALM



PARADISE PALMS - KISSIMMEE



SABAL PALM / BEACH PALM



2 ANDARES
4 QUARTOS
3 BANHEIROS
177 M²

PARADISE PALMS - KISSIMMEE



ROYALE PALM



PARADISE PALMS - KISSIMMEE

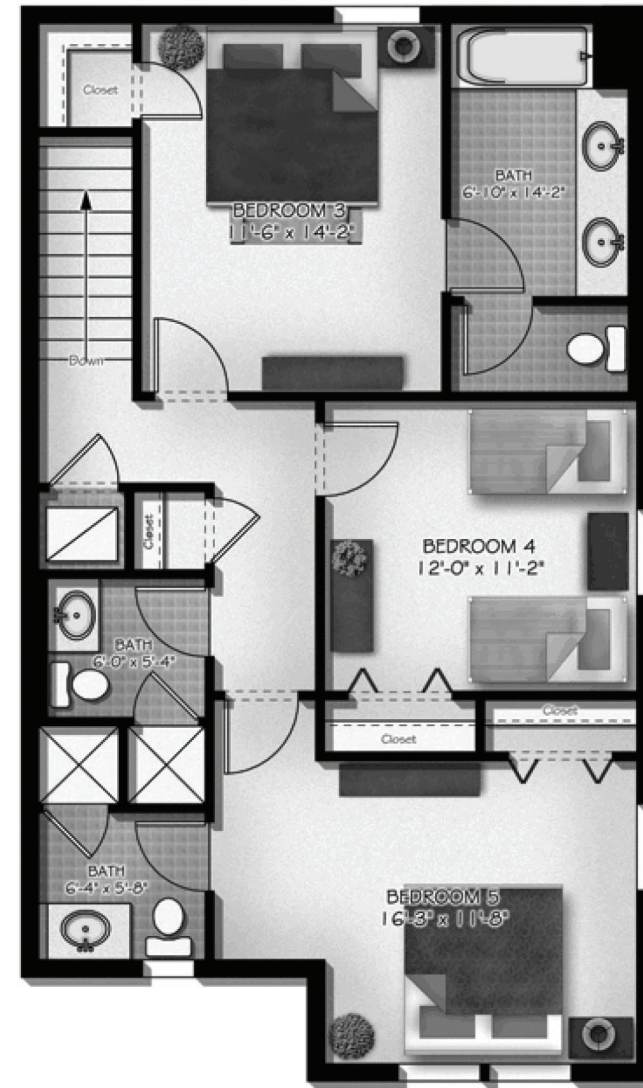
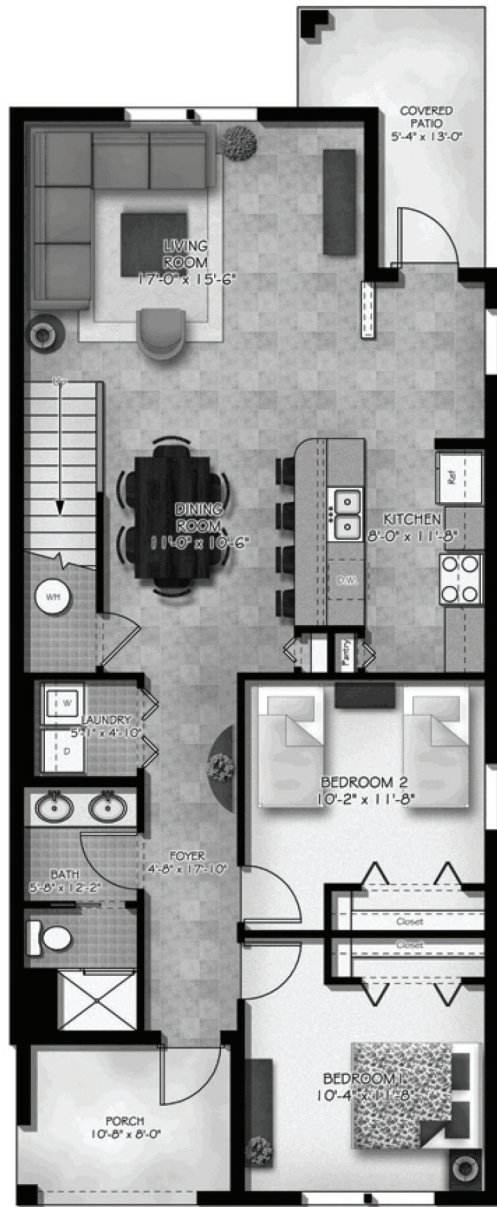


ROYALE PALM



PARADISE PALMS - KISSIMMEE

ROYALE PALM



2 ANDARES
5 QUARTOS
4 BANHEIROS
197 M²

PARADISE PALMS - KISSIMMEE



ALEXANDER PALM



PARADISE PALMS - KISSIMMEE



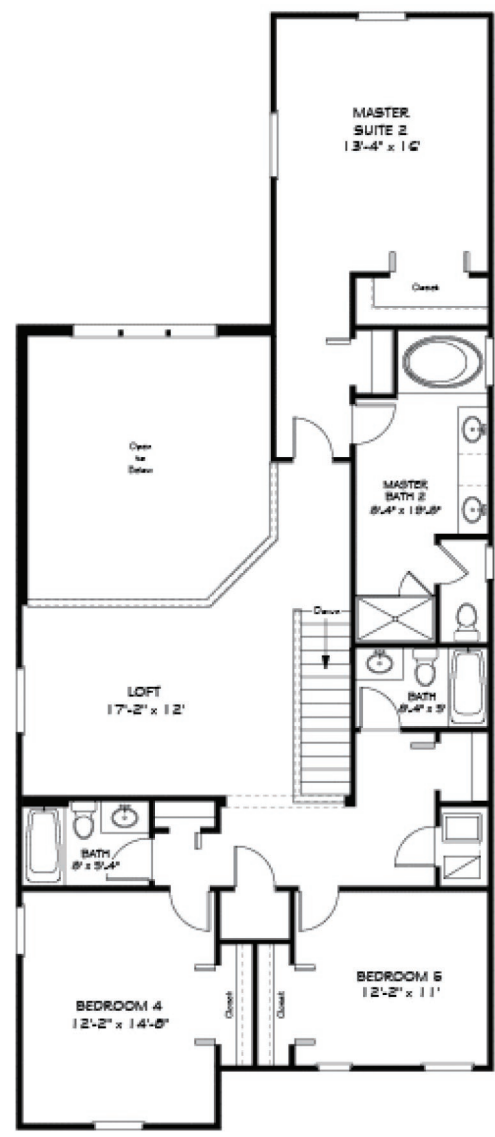
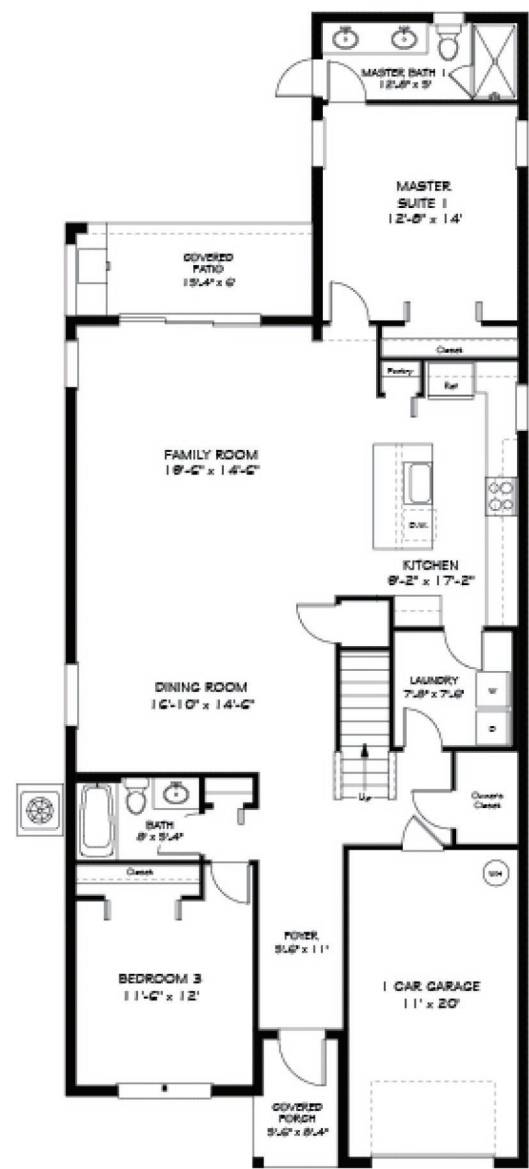
ALEXANDER PALM



PARADISE PALMS - KISSIMMEE



ALEXANDER PALM



2 ANDARES
5 QUARTOS
5 BANHEIROS
280 M²

PARADISE PALMS - KISSIMMEE



MAJESTY PALM



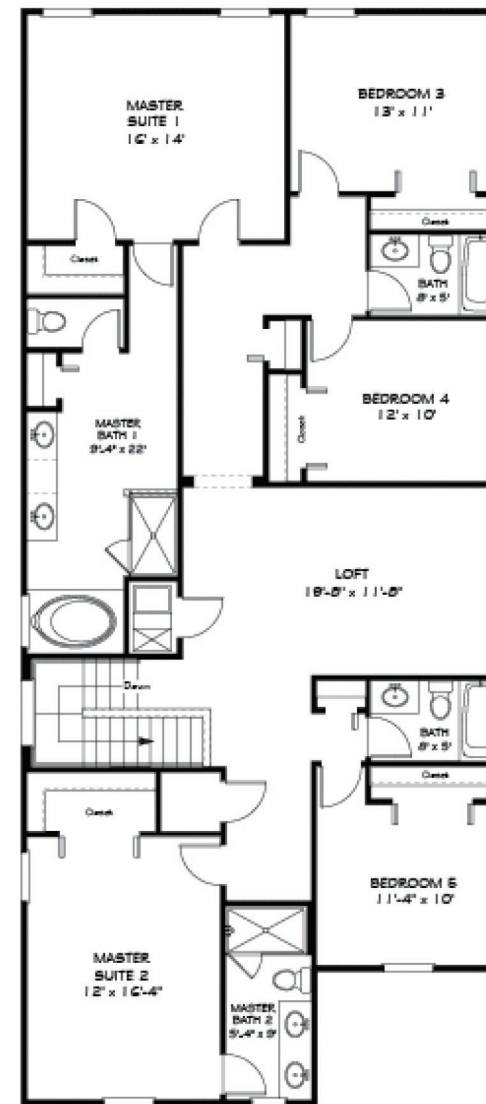
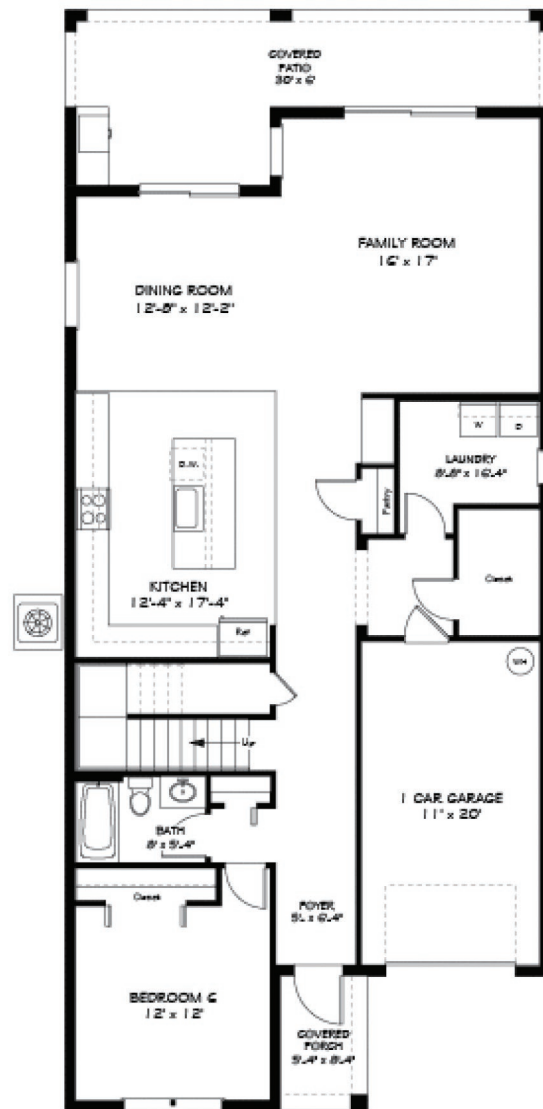
PARADISE PALMS - KISSIMMEE



MAJESTY PALM



MAJESTY PALM



2 ANDARES
6 QUARTOS
5 BANHEIROS
304 M²

PARADISE PALMS - KISSIMMEE





Casas para Temporada na
Disney